

# ANNUAL REPORT

## 2020

# Rock Island County Health Department

2112 25th Ave Rock Island, IL  
[www.richd.org](http://www.richd.org)  
309-793-1955



'20 –A year of pandemic endured, challenges traversed and gratitude shared

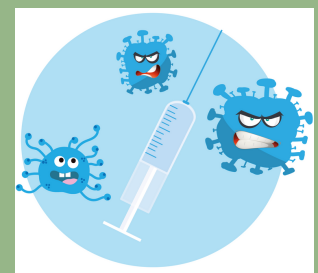
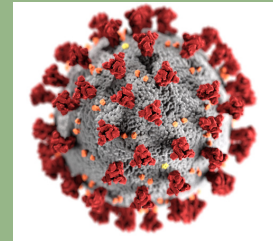
# 2020 YEAR IN REVIEW

How can you summarize 2020? A very tough question to ask of public health. FY2020 was the most challenging year in modern history for the Rock Island County Health Department.

The year began with news of a new virus in other parts of the world spreading into the United States. It was in March 2020, that Rock Island County saw its first case of COVID-19 and sadly not long after that, the first death from COVID-19. As of this date, Rock Island County has had 14,900 total positive cases. We have lost 324 residents to this deadly pandemic. Early 2021 has brought more hope of putting the pandemic behind us as the vaccines are now plentiful and being given every day in our county.

From the outset of the pandemic, the Rock Island County Health Department and our partners joined together to share sound, unified public health messages. This group made up of bi-state partners in public health, medical facilities, school leaders, long term care facilities, businesses, faith organizations, emergency management, social service agencies and many others formed the Quad City COVID-19 Coalition.

Coalition members met regularly, sometimes daily to ensure information sharing and collaboration with all community partners. Scott and Rock Island County public health held joint press briefings to share important messages regarding masking, social distancing and frequent handwashing along with daily case counts, hospitalizations and deaths. To limit in person meetings and gathering sizes; we learned how to use new tools such as Zoom, Webex and conference calls to be able to discuss the various guidance coming out from each state and how best to present it to the public. We brought in various community partners to speak about their efforts to mitigate the pandemic such as infectious disease physicians, hospital directors, emergency medical service agencies, and businesses.



Continued on next page. . .

# 2020 YEAR IN REVIEW CONT...

As of the end of 2020, there was still no vaccine yet to administer. We continued to repeat that the best tools (3 Ws) to prevent the spread of COVID-19 were to:

Wear a mask

Wash your hands

Watch your distance (maintain six feet of distance from others)

Even with all the changes faced during the pandemic, the Rock Island County Health Department continued to serve residents with all of our regular programs albeit somewhat differently delivered. For example, WIC services were held as curbside, allowing new moms and babies to stay in their vehicles for safety and still receive nutrition education and benefits. I hope that by reading this report; you can appreciate how hard the men and women of the Rock Island County Health Department work to serve this community each and every day. I am proud of everyone here and everything we have accomplished over the last year. We are all eager provide vaccinations and help end this pandemic.

*Nita Ludwig*

RICHD Administrator





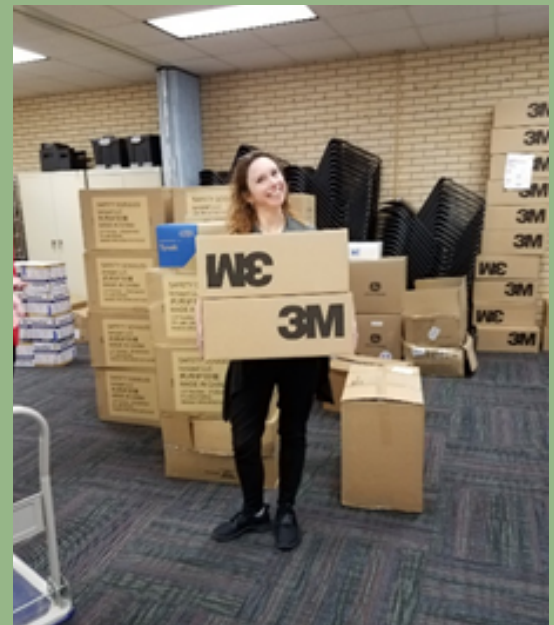
# EMERGENCY PLANNING AND RESPONSE

Rock Island County Health Department collaborates with many local community response partners in both Rock Island and Scott County (Iowa) to plan for all types of potential emergencies. Exercises give us valuable information which we use to improve our response plans which in turn increase preparedness levels. If there was a release of a biological agent such as anthrax or smallpox, the Rock Island County Health Department would be responsible to distribute medication or vaccinate all the residents of Rock Island County (over 143,000 people).

This year has been a test for what Emergency Preparedness and Response strives. A Quad Cities COVID-19 Coalition was formed March 12th, at Scott Emergency Communication Center, with both Scott County and Rock Island County Health Departments, Scott County and Rock Island County Emergency Management, Unity Point and Genesis Hospitals, Community Health Care, elected officials, and others to monitor and address issues with the novel coronavirus that have an impact on the Quad Cities. This Coalition has met every week since its initiation.

Also in March, Rock Island County Health Department had started receiving PPE (Personal Protective Equipment) from the Illinois Pharmaceutical Stockpile and the Strategic National Stockpile to assist healthcare entities, nursing homes, group homes, and others with the shortage that occurred for these items throughout the United States. RICHD filled over 200 requests from those agencies in need.

Continued on next page. . .



**Kathryn Meyer, RICHD  
Manager of Emergency  
Planning and Response  
organizing much needed PPE  
that arrived on May 20th, 2020.**





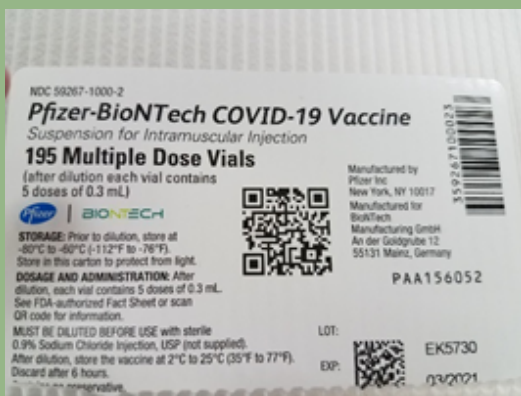
# EMERGENCY PLANNING AND RESPONSE CONT...

At the request of RICHD, a temporary IDPH COVID-19 testing site was established at the QCCA Expo Center parking lot at the end of June. Periodic IDPH testing sites continued throughout the year at that location, as well as the Tax Slayer Center parking lot, and the Camden Centre parking lot.



**QCCA Expo Testing Site**

During this year, interest in helping RICHD in the fight against COVID-19 increased, and our Rock Island County Medical Reserve Corps received over 75 applications from members of the community to join us in our public health mission. Members of the Rock Island MRC assisted with COVID-19 contact tracing. In addition, 21 contractual contact tracers were hired to contact residents in Rock Island County who tested positive and identify those of whom they had contact.



**Vaccine arrival and sorting**



RICHD held a drive-thru Flu Vaccine Clinic at the Greater Quad Cities Auto Auction, September 30th. Twenty-eight RICHD staff participated in the event. 130 people were inoculated. This not only was a great way to keep the community healthy, but was also good practice for what was needed to be done when COVID-19 vaccine became available.

In a momentous occasion, our Administrator and Manager of Emergency Planning and Response traveled to the regional distribution site to pick up Rock Island County's first allocation of Pfizer vaccine December 16th. This allocation was designated for both Unity Point and Genesis hospitals to vaccinate their healthcare workers, as deemed by IDPH. RICHD had been working on planning for mass vaccination when vaccine becomes readily available.

# INFECTIOUS DISEASE PROGRAM

## COMMUNICABLE DISEASE

Rock Island County Health Department nurses interview county residents who are reported to have or have been exposed to certain disease and conditions deemed reportable by the Illinois Department of Public Health (IDPH). Nurses investigate any outbreaks and refer for medical follow up as needed. Diseases on the list of 'Illinois Reportable Diseases' have a specific period in which they must be reported to the local health department. Some diseases require immediate notification 24 hours per day, 7 days per week. Physicians, laboratories and other providers can reach the health department staff at any time for disease reporting.



## REFUGEE HEALTH AND IMMIGRATION/NATURALIZATION

Medical examinations and referrals are provided to refugees resettling to Rock Island County or to individuals applying for a change of status under immigrations and naturalization laws. Immigration & Refugee numbers have declined in the last few years due to a reduction of refugees allowed into the United States. RICHD was temporarily without a physician or Civil Surgeon for much of 2020. RICHD has a new medical director, Dr. Cheryl True, who is also a Civil Surgeon designee. Immigration & Refugee clinics are scheduled to resume in February 2021.



# IMMUNIZATIONS

RICHD offers all types of immunizations for adults and children to prevent disease and promotes optimal health and wellness. Each fall we provide Flu shot clinics throughout the county ensuring that all residents have access to an annual flu vaccination. In 2020 we held off site clinics at more than 48 locations, in addition to holding flu shot 'walk in' clinics at the health department every Tuesday from October 1 – November 30, 2020, and hosting our first Flu Vaccination drive through on September 30, 2020.

Total Flu Shots given: 1,702

Total of Childhood immunizations given: 641

Total of Adults immunizations given: 307

Total Covid Vaccinations given (12/28/2020): 20

Total of all immunizations given: 2,670



# TUBERCULOSIS (TB)

RICHD's TB program provides nursing consultation regarding TB treatment, contact investigations, and educations on infection control. RICHD administer and reads TB skin tests. Medications are dispensed to active and latent TB clients. Medications help to prevent TB from becoming active in people who test positive for the germ and those with family members or who are in close contact to someone with active tuberculosis.

TB Skin Tests:	184
TB Skin Test Reads:	163
Quantiferon Gold TB Tests:	19
Total positive TB tests:	5
Chest X-Rays:	6
Patients on preventative Meds:	0
Active TB Cases:	2







# SEXUALLY TRANSMITTED DISEASES

STI's remained high throughout 2020 both nationally and in Rock Island County. Gonorrhea returned to an outbreak status. We also had an early syphilis outbreak. RICHD promotes safe sex practices in order to prevent the spread of diseases and infections to protect the health of the general public. Communicable disease nurses follow up with all STI patients in order to ensure they receive proper services. The RICHD STI clinic will resume weekly clinics by the end of 2021.

## OTHER REPORTABLE INFECTIOUS DISEASES-2020

### Other Reportable Infectious Diseases-2020

Covid-19	10990
Chickenpox	1
Haemophilus Influenza	1
Hepatitis A	1
Hepatitis B	18
Hepatitis C	56
Histoplasmosis	10
Legionellosis	4
Lyme Disease	11
Shigellosis	0
Staphylococcal	0
Streptococcal, Group A	7
Whooping Cough	0
Investigated cases-determined	
'determined not to be a case'	475
Rabies investigations	
(potential human exposure)	54
Influenza (Adult with ICU admission)	18
Salmonellosis	22



# ENVIRONMENTAL HEALTH

As with all Health Department programs the Environmental section had to re-prioritize and change our focus in light of the Covid-19 Pandemic. The biggest change was putting a temporary halt on "routine" inspections of food service facilities and shifting our focus to an advisory role to those establishments. At the onset of Covid-19 these discussions involved such things as: Putting a temporary halt to indoor dining services, working with food establishments to develop and implement "best practices" for to go orders and curbside pick-up, as well as encouraging the cessation of self-serve of self-service items.

During the first few months of the pandemic the U.S. saw a large number of outbreaks occurring at meat processing plants. Rock Island County was no different as almost half of our cases (at that time) were attributed to a meat processing plant located in our county. Members of our staff made an onsite visit and worked with plant management on ways identify and implement strategies to slow the spread of infection. Strategies discussed included: Taking temperatures of employees as the check in for their shift, providing proper face coverings, installation of hand sanitizing dispensers throughout the facility, installation of washable barriers between work stations, staggering lunches and shift breaks, and slowing down production speed so that workers could practice better social distancing throughout the production process.

As 2020 came to an end and the vaccines began to roll out, we were hopeful about seeing the light at the end of the tunnel. Our focus as a department continued to be twofold: First, continuing to provide guidance and enforcement with regards to the Governor's Executive Orders. Secondly, assisting the Infectious Disease and Emergency Preparedness departments in supplying the manpower necessary to implement the many mass vaccination clinics necessary to vaccinate as many residents as possible. It is the implementation of these strategies that will continue to bring down the infection rate and allow us to navigate our way through the phases of recovery and see that light begin to shine brighter as we return to a sense of normalcy.



## ENVIRONMENTAL HEALTH STATISTICS 2020

Program	Inspections	Hours
Food Sanitation	412	733
Potable Water	345	295.5
Private Sewage Disposal	605	683
Solid Waste	55	53.5
Nuisance Control	53	30.5
Body Art/Tanning	8(BA) 28 (T)	10 (BA) 17.5 (T)
West Nile Virus	48	42

# HEALTH EDUCATION AND PROMOTION

The health department's health educator promotes healthy behaviors in a variety of ways, including presentations to community schools, churches, businesses or other organizations. Education is also provided by other health department staff at clinic visits, home visits, inspections, media events and health fairs. Our health educator is an active member of community coalitions including the Quad Cities Youth Conference, the Coalition Advocating for Underage Substance Elimination, and Tobacco-Free Quad Cities. Throughout 2020, most of this education occurred via digital outreach. One of the biggest outreach projects of 2020 included making a YouTube video showing how to navigate our WIC curbside process that was implemented at the start of the pandemic.

Additionally, our health educator provides tobacco cessation education and resources through the Illinois Tobacco-free Communities grant. The grant also includes promoting implementation or strengthening of smoke-free and tobacco-free policies for public places such as parks, college campuses, and public housing. Our health educator worked closely with the Tobacco-Free Quad Cities coalition to develop a campaign to raise awareness about the harms of vaping/e-cigarettes. The coalition developed an award titled the Champion Award that recognizes community organizations that go above and beyond a standard smoke-free workplace policy.





# VITAL RECORDS

*2020*

The local Registrar's office of Vital Records (birth and death certificates for Rock Island County is located at the Rock Island County Health Department).

Certified copies of birth certificates dating back to 1985 can be obtained at our office. Death certificates dating back to 1999 can also be obtained at the health department office.

Births  
1570

Deaths  
1823

# WIC - Women, Infants and Children

**Clinic/phone visits: 12,640**

**Exclusively or partially breastfed infants: 400 average per month**

**Nutrition education sessions: 1,625**

WIC's mission is to assure healthy pregnancies, healthy birth outcomes, and healthy growth and development for women, infants, and children up to age 5 who are at nutritional risk. All Illinois Department of Human Services programs operated under a disaster plan starting in March due to the pandemic that suspended all in-clinic visits. WIC nurses and nutritionists, collectively known as Certifying Health Professionals, or CPAs, served all clients over the phone. The program still offered nutritional education and proper feeding and developmental guidance. All anthropometric data collection was suspended, but CPAs recorded parent-reported information after a medical provider visit, as appropriate. We offered drive-through services for benefit pickup at both the Rock Island and Moline sites. We suspended services in East Moline at the request of Community Health Care, our host and partner. CHC consolidated many services at the Moline site.

WIC implemented the long-awaited electronic benefit transfer, or EBT, card system on Aug. 31. This was the biggest change Illinois WIC in almost 25 years. The entire WIC staff worked incredibly

hard to make the transition as smooth as possible by participating in hours of virtual trainings and in-office practice from June-August. The week before we transitioned, the clinic was closed for three days of intensive web-based training and data conversion. Before the pandemic, staff was scheduled to attend in-person training, which would have made the system change easier. Clients report that they love this new system, which includes a smartphone app that shows what foods are WIC approved for that client and in what quantities. WIC caseload increased in 2020. We attribute the increase to greater financial need during the pandemic and the easier-to-use I-WIC system.

Our breastmilk depot at our Moline site continued to accept donations from mothers with extra breastmilk, though donations were down significantly in 2020. We shipped donated milk to the Milk Bank of the Western Great Lakes in Elk Grove Village, near Chicago. From there, the milk is tested for safety, pasteurized, and then shipped to medically fragile babies in neonatal intensive care units at hospitals in Illinois and Wisconsin.



# Family Case Management



## High-Risk Infant Follow Up

**Infants Receiving Follow Up: 65**

Local hospitals refer high-risk infants to the health department through the adverse pregnancy outcome reporting system, or APORS. A public health nurse then provides targeted case management to the family until the child turns 2 years old. Medical case management services includes pediatric physical assessments, developmental assessments, annual home visits and referrals to specialists or other community services as needed. All home visits were suspended in March due to the pandemic and as authorized by the Illinois Department of Human Services. The registered nurse case manager worked closely to make sure the child received appropriate well-child screenings and immunizations, while also attended to children's child's specific medical diagnosis that qualified the children for the HRIF program. We saw a reduction in the number of families that chose to take HRIF services. Many families cited better care coordination through their primary-care medical provider.

Family Case Management works to lower infant mortality by connecting pregnant women and their infants to health care and community resources that the family might need throughout the child's first year. The Family Case Management team worked under a disaster plan due to the pandemic as authorized by the Illinois Department of Human Services. All home visits were suspended in March.

The FCM team provided services over the telephone and worked closely to coordinated service with WIC staff. Once a pregnant woman or woman with a child younger than 1 talked with WIC staff over the phone, the client was transferred to a case manager. Case managers focused on assisting with immediate pandemic-related needs, including prenatal and postpartum depression screenings, developmental screenings and resource needs. We saw a troubling increase in higher scores on maternal depression screenings. More women scored particularly high on the stress scale. In those cases, we made immediate referrals to the woman's obstetrician and to partner mental health agencies. We then followed up with the client within two days.

Case managers emphasized the important of safe-sleep practices and on-time immunizations and conducted screenings to ensure babies reached developmental milestones. Those who showed developmental delays were referred to early intervention services. WIC and Family Case Management staff work collaboratively with clients at the Moline and Rock Island sites.

**Home visits: 419 (suspended in March)**  
**Office/phone visits: 8,052**  
**Developmental Screenings: 1,487**  
**Post-partum Depression Screenings: 1,596**





# Healthworks of Illinois

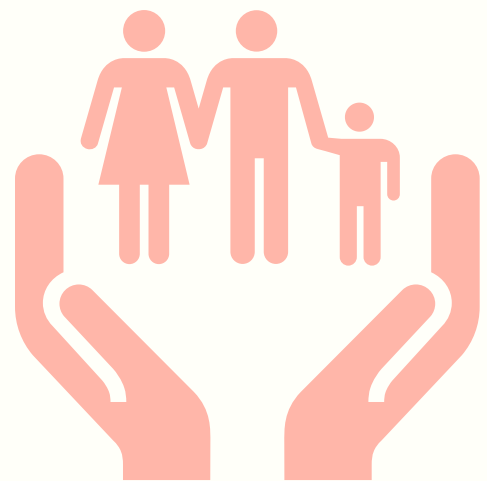
## Lead Poisoning Prevention

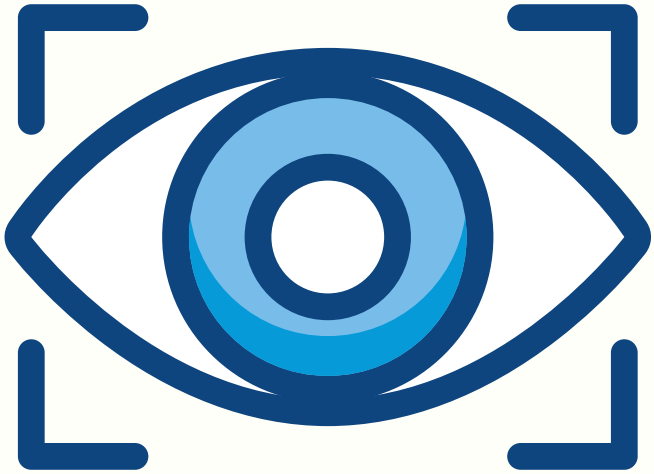
**Children Screened: 2,717**  
**Children with elevated lead levels: 334**  
**Home visits completed: 7**  
**People Educated: 6,950**

The pandemic causes a 36% reduction in the number of children screened for elevated blood lead levels, from 4,284 in 2019 to 2,717 in 2020. Screenings plummeted in April, May and June, but they started to rebound in the late summer when children went to medical providers for well-child care in preparation for school. Normally, all children coming to WIC would be screened at age 1 and 2. However, because of the pandemic, WIC staff did not see children in clinics after late March. Lead home visits also were suspended in March because of the pandemic. On occasion when a child's blood lead level was significantly high and case managers couldn't identify the source of lead over the phone, case managers would complete a COVID-safer home visit wearing proper Personal Protective Equipment. The department also continued to collaborate with the cities of Rock Island, Moline, East Moline and Silvis in a \$2.4 million federal grant to mitigate lead hazards from homes. Work is ongoing with our partners, but the pandemic caused fewer home mitigations to be completed during the construction season.

**Foster Children Case Managed in 10-county region: 683 (monthly average)**  
**Rock Island County foster children receiving case management services: 131 (monthly average)**

Healthworks is a case management program for children in foster care. In partnership with the Department of Children and Family Services, the health department serves as a lead agency for a 10-county area. Case managers work to ensure foster children have regular medical and dental visits and that any other medical needs are met. The case manager that exclusively serves Rock Island children ages 45 days to 6 years has seen an explosion of children entering foster care over the last two years, jumping from fewer than 85 children to more than 130.





## Vision and Hearing Screening

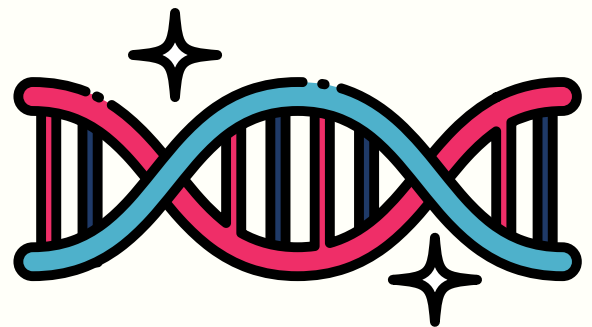
*0 children seen for the year 2020 for Vision and Hearing due to Covid-19. RICHD plans to resume vision and hearing screenings in the Fall of 2021.*



## Genetics

Newborns are tested by the hospitals for metabolic diseases and conditions. They also have a newborn hearing test. If issues are detected, RICHD then follows up with the family to provide education and referral assistance. RICHD hosts clinics several times per year for children with sickle cell disease and other blood disorders. These clinics are a collaboration with OSF Medical Center in Peoria. Dr. Kay Savings conducts the clinics at the health department. Clinics were suspended in the first half of the year due to the pandemic, but they resumed in July with COVID-19 safety precautions in place.

**Number served through OSF clinic at RICHD: 48, with no clinics until July because of the pandemic**



# FISCAL REPORT

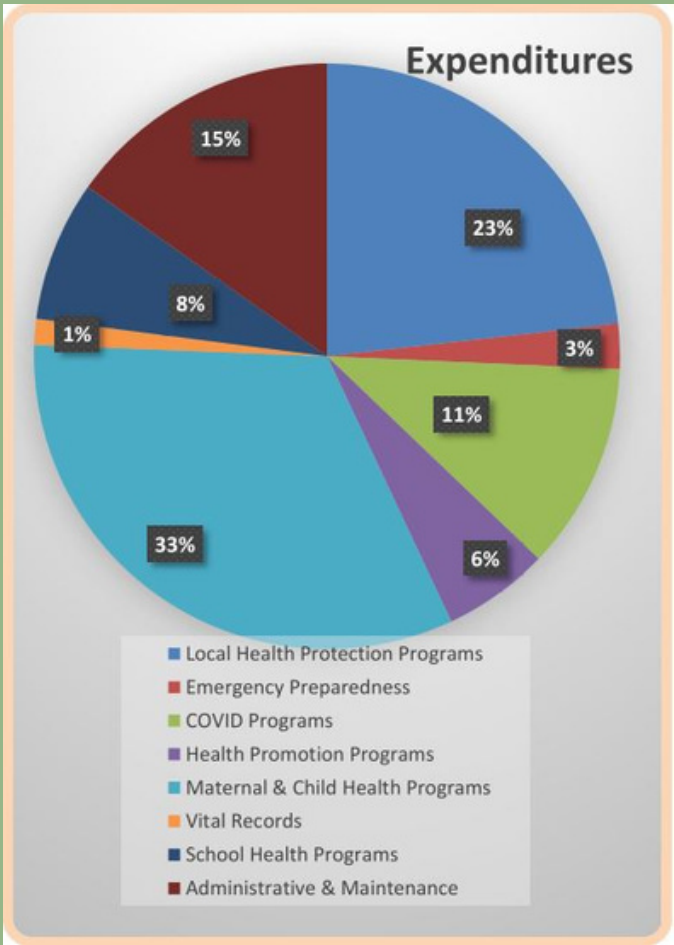
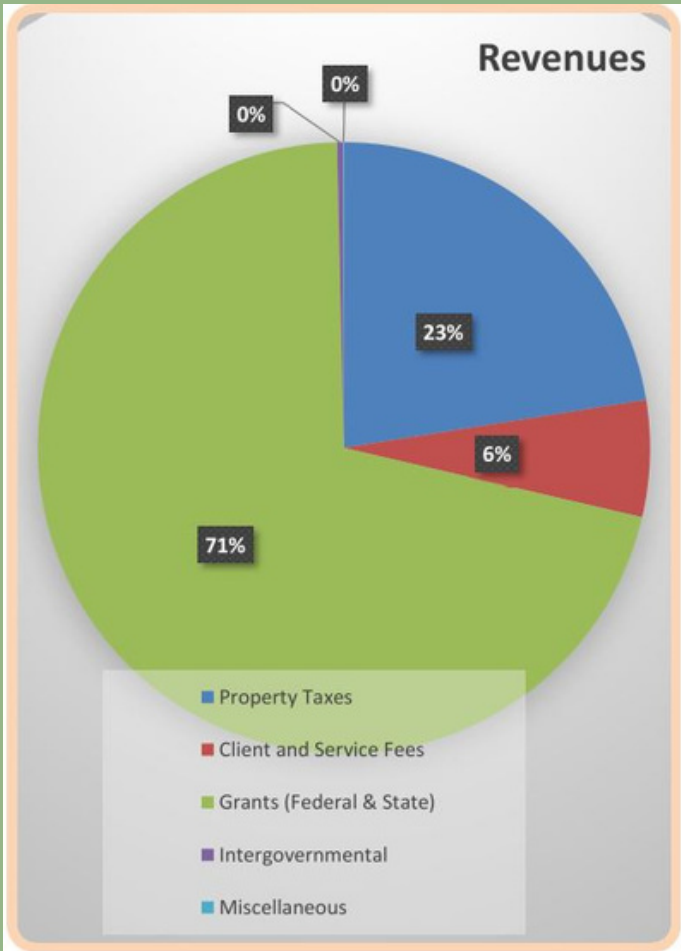


Revenues

Property Taxes	1,260,100
Client and Service Fees	346,219
Grants (Federal & State)	3,981,179
Intergovernmental	17,425
Miscellaneous	2,940
<b>Total</b>	<b>5,607,863</b>

Expenditures

Local Health Protection Programs	976,941
Emergency Preparedness	103,775
COVID Programs	481,878
Health Promotion Programs	246,970
Maternal & Child Health Programs	1,370,166
Vital Records	60,259
School Health Programs	326,097
Administrative & Maintenance	639,076
<b>Total</b>	<b>4,205,163</b>





# COVID-19 RESPONSE

## Receiving PPE



One of three IL DOT truck delivering PPE to the USPS Distribution site in Milan, IL. May 20th, 2020 (7000+ N95s, 10,000 surgical masks, 8000 gloves, 5400+ goggles, 7000 face shields, 800 coveralls and 2900+ gowns)



RICHD Employees loaded the PPE into Health Department cars and brought it back to unload.



Much needed boxes of gowns and N95s stacked



# COVID-19 RESPONSE

## Distributing PPE



**PPE (Gowns, goggles, hand sanitizer, surgicals mask and more) ready for long term care facilities to pick up from RICHD**



**Locally made and donated John Deere Face Shields**



**Boxes of gowns requested from long term care facilities ready to be picked up from RICHD**



# COVID-19 RESPONSE

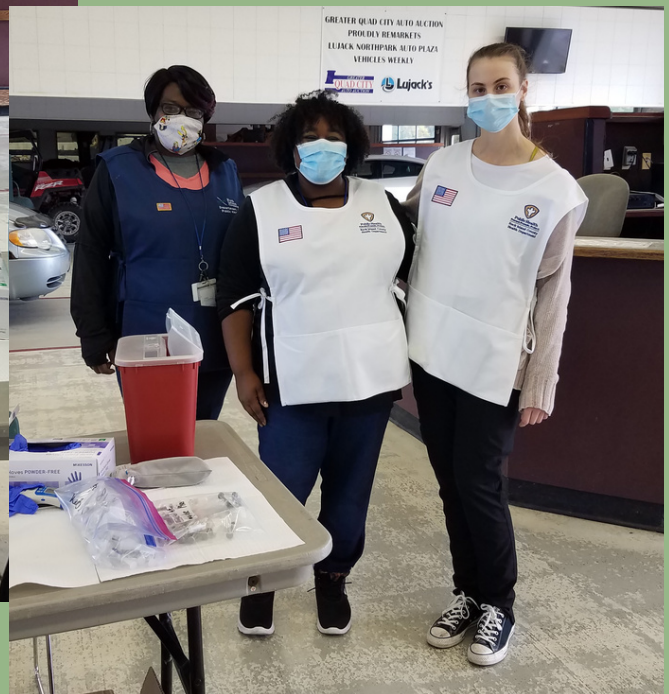
## Initial Vaccine Distribution - Greater QC Auto Auction Milan, IL



Pre-clinic briefing



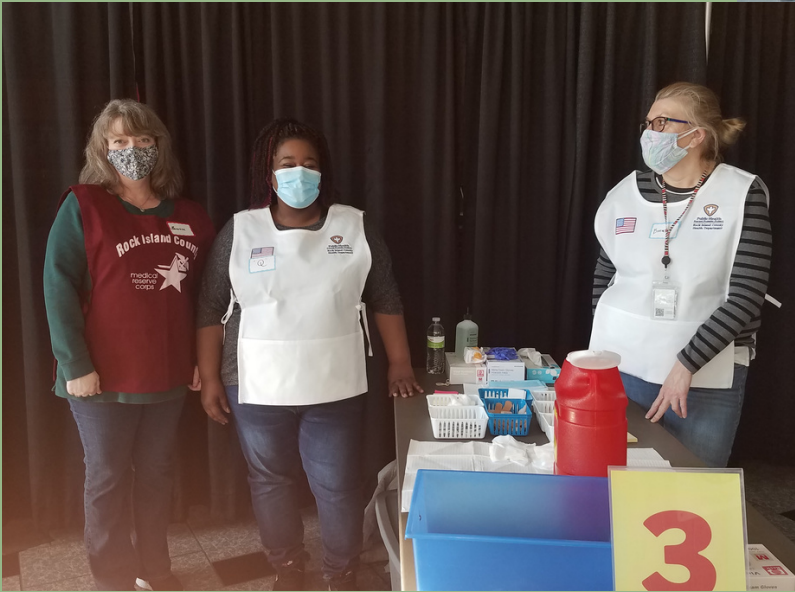
RICHD Nurses Ready for clinic day!





# COVID-19 RESPONSE

## Mass Vaccination - TaxSlayer Center Moline, IL



**RICHD Employees and Volunteers ready for a COVID-19 Vaccine Clinic in snowy Jan/Feb 2021**



**The Unified Command Post bus provided for the COVID-19 vaccine clinic to call patients in over the radio to enable social distancing in vehicles.**





# 2020 HEALTH BOARD MEMBERS

**President: Mr. Doug Vroman**

**Vice President: Mr. Randy Jacobs**

**Secretary: Ms. KJ Whitley**

**Treasurer: Ms. Louisa Ewert**

**Ms. Edna Sowards**

**Mr. Michael Daly**

**Naurin Ahmad, MD**

**Mr. Mark Bollaert, DDS**

**Mr. Randy Jacobs**

**Mr. Andrew McClarity**

**Mr. Leon Gibson**

**Ms. Deborah Freiburg**

**Ms. Jean Wardlow, MD**

**RI COUNTY HEALTH DEPT. EMPLOYEES**

**FULLTIME**

**PART TIME**

**40**

**5**